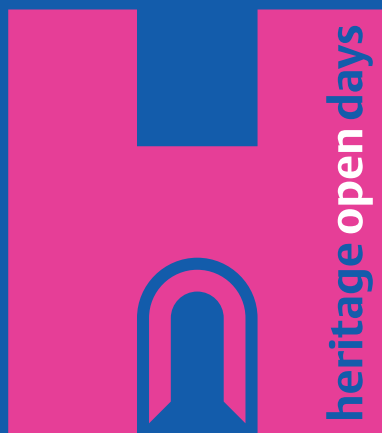
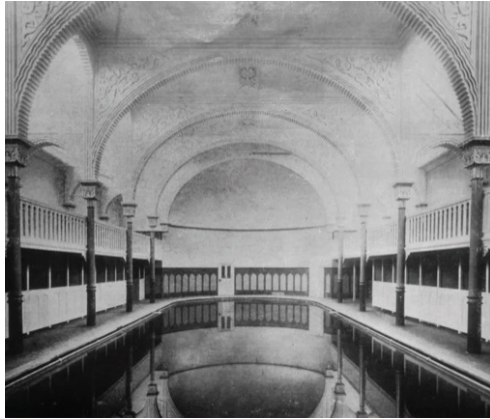


# CHELTENHAM HERITAGE OPEN DAYS

6–15 September 2024





# Welcome to Cheltenham Heritage Open Days 2024!

Heritage Open Days enable you to see behind the doors of some of our finest and most interesting buildings as well as to learn more about our town's rich history. Best of all, it's all FREE.

This year's themes are **Connections – Routes – Networks** and **Secret Places** and we have a full programme to bring them alive.

We welcome venues old and new including The Everyman, Cheltenham Ladies' College and Montpellier Gardens. Don't miss the South Cheltenham History Festival, new for this year, with a packed three days of walks, talks and an exhibition.

This year's talks are guaranteed to inspire you. They include *Gloucestershire's Queen*, *The Greys: Black Gold, Navy and Silver* as well as an illuminating talk on Christ Church stained glass windows. See page 12 for details of all the talks and how to book.

Our walks are always oversubscribed so please be sure to book early. If you are unable to join one, we have some fascinating self-guided walks that you can do at a time to suit you – see page 5 for details.

None of this would be possible without the generosity of building owners and occupiers, the guides and speakers and all the volunteers. I would like to thank the brilliant team, and everyone who has helped to make Heritage Open Days such a success.

**Andrew Booton**  
Chair, Cheltenham Civic Society



## 2024 THEMES



Look out for these symbols in the brochure to discover Cheltenham's Secret Places **SP** and Connections, Routes and Networks **CRN**.

Key for 2024 themes

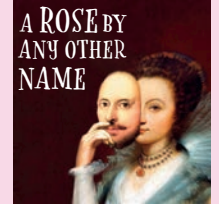
- CRN** Connections – Routes – Networks
- SP** Secret Places

### A Rose By Any Other Name

📍 An audio play by Lou Beckett that is available for download or to stream at any time. Go to [www.loubeckett.com](http://www.loubeckett.com) ★ Duration 45 minutes  
It's 2016, and two young lovers – a literary detective and a Shakespeare scholar – engage in a witty, comedic battle over the Bard's authorship. This light-hearted play invites audiences to ponder the question of who truly wrote Shakespeare's plays, blending romance, humour, and intrigue in a captivating theatrical experience.

Judith Wordsworth, *Gloucestershire Echo* ★★★★★

'The audience of this thought-provoking tour was well entertained' 'comedic battle of wits, wills and words.'



### All Saints Church

📍 All Saints Road, Pittville GL52 2HG

- 🕒 Friday 6, 2-6pm;  
Saturday 7, 10am-6pm;  
Sunday 8, 3-5pm;  
Wednesday 11, 2-6pm;  
Thursday 12, 2-6pm;  
Friday 13, 2-6pm;  
Saturday 14, 10am-6pm

📍 Refreshments/Disabled access/Toilets (no wheelchair access currently)

★ Tours at 3pm, Wednesday–Saturday. No booking required. No charge but donations welcome.

Teas and coffee available  
Dating from 1868, All Saints is a Grade I listed building, built in the style referred to as 'French Gothic Revival' by John Middleton. The building was described (and we paraphrase), "as producing here, the effect that Pugin wanted to achieve and never quite managed."

- Fine Victorian ironwork, murals and brassware



- Baptism, marriage and funeral records from 1868 on display and available to examine
- One of 300 major churches in the UK
- Associations with Gustav Holst, whose father was organist here

for 25 years

Mass times during the week, when the church is open an hour before the service: Thursday 11.15am, Friday 12noon, Saturday 10am, Sunday 8am & 10.30am. Access will be limited during mass times.

### Cambray Baptist Church

📍 Cambray Place GL50 1JS

- 🕒 Friday 6 & Saturday 7, 10am-3pm

📍 Disabled access (some areas are only accessible by steep stairs)/Toilets

★ Tours are available throughout the day

Cambray Baptist Church is a listed building which was built in 1855. It has been updated and extended over the years, but retains many original features. The building is home to a large active church and there will be displays on our history.



## CHELTENHAM HERITAGE OPEN DAYS

**ACKNOWLEDGEMENTS** Heritage Open Days is organised by Cheltenham Civic Society, with support and sponsorship from Cheltenham Borough Council. Thank you to walk leaders, speakers and event organisers from buildings which are opening their doors to the public for its enlightenment and enjoyment.

Information correct at time of going to print © Cheltenham Civic Society. The organisers reserve the right to alter or cancel any aspects if unavoidable. Heritage Open Days events are free to explore.





**3 Cheltenham Arts Council – Celebration of the Arts**

📍 The Promenade GL50 1PJ  
 🕒 Saturday 7, 10am-4pm  
 Market Stalls manned by volunteers from a wide range of Cheltenham's local Arts societies and organisations.



**4 Cheltenham Bridge Club**

📍 4 Tivoli Road GL50 2TG 🕒 Saturday 14, 10am-4pm  
 🍷 Refreshments/Disabled access/Free parking/Toilets  
 ★ There will be a permanent bridge game in progress which visitors are welcome to observe. No need to book, just turn up. Guides available to assist. The Club is able to accommodate up to 100 visitors through the day  
 The Club is housed in an early Victorian Regency style semi. It has been tastefully restored/modernised recently. Visitors are invited to tour the building, review its history and learn about what now goes on there.



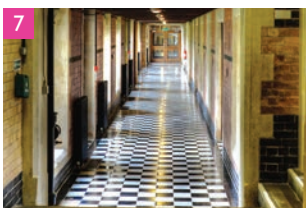
**5 Cheltenham College Chapel**

📍 Bath Road GL53 7LD  
 🕒 Monday 9–Friday 13, 9.30am  
 🚻 Disabled access/Toilets  
 ★ 8 places per tour. Pre-book by emailing archives@cheltenhamcollege.org  
 Join us to discover the history of Cheltenham College (established 1841) in our magnificent Chapel.



**6 Cheltenham Hindu Temple**

📍 Hindu Community Centre, 64 Swindon Road GL50 4AY  
 🕒 Friday 6–Sunday 15. Monday–Friday 9-11am & 6-9pm;  
 Saturday 9.30am-12noon & 2-5pm  
 🍷 Refreshments/Disabled access/Free parking (limited)/Toilets  
 ★ Talk & Tour: Saturday 7, 10.30am & 2pm. Duration 20 minutes.  
 No need to pre-book  
 We welcome you anytime during opening hours to ask questions and view for yourself. *Please note: You will be required to take your shoes off in the main temple room.*



**7 Cheltenham Ladies' College**

📍 Bayshill Road GL50 3EP  
 🕒 Saturday 7, 1-4pm 🚻 Disabled access (check when making a booking)/Toilets  
 ★ Tours at 1pm, 2pm & 3pm: meet at College Main Entrance on Bayshill Road. Duration 60 minutes. 10 places per tour.  
 Pre-book by emailing hods@cheltcivicsoc.org  
 Dating from 1873, main buildings are designed in ecclesiastical style. Interior shows influence of the Arts and Crafts Movement. Hour-long tour also includes History of College display room.



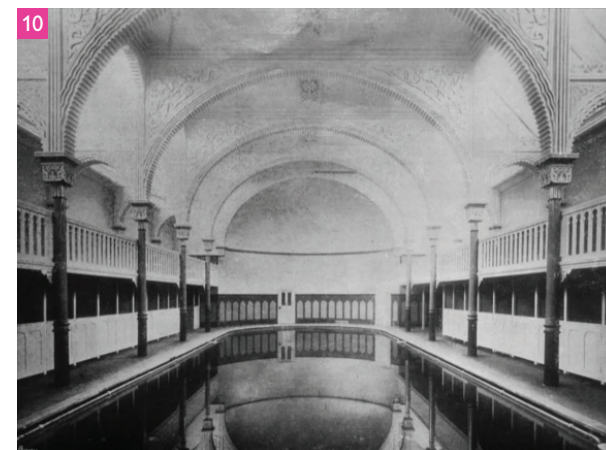
**8 Cheltenham Masonic Hall**

📍 Portland Street GL52 2PB 🕒 Saturday 14, 10am-4pm  
 🍷 Refreshments/Disabled access (Ground floor only)/Toilets  
 ★ Unsuitable for children under 5 years  
 Purpose-built Masonic Hall constructed in 1823 by architect George Allen Underwood. Original Regency features – early 19th century furnishings; museum and library of masonic memorabilia; dining room in Knights Templar encampment style, 1700s pipe organ, wrought iron balustrade on the cantilevered spiral staircase, and balcony railing. Displays on Freemasonry and charity.

**Cheltenham Minster, St Mary's**



📍 Well Walk off Clarence Street GL50 3HF  
 🕒 Friday 6, 11am-3pm; Saturday 7, 11am-3pm; Sunday 8, 11am-4pm:  
 Talk & Tour at 3pm; Monday 9, Tuesday 10 & Wednesday 11, 11am-3pm;  
 Thursday 12, 11am-3pm & 6.30-8.30pm:  
 Bell Tower from 6.30-8pm and talk at 7pm; Friday 13, 11am-3pm;  
 Saturday 14, 11am-3pm; Sunday 15, 11am-4pm. Walk: Friday 6, 11am  
 🍷 Refreshments (after events)/Disabled access (ground floor only)/Toilets (including accessible toilet)  
 ★ Bell Event: Ringing of bells (20 minutes) plus talk. Visitors not wanting to climb the tower can watch on the screen in the Minster  
 The Minster is the only medieval church in the town, with outstanding stained glass windows and interesting memorial tablets and an ancient schoolroom. Sunday 8 and Sunday 15, 11am traditional Holy Communion service; 3.30pm traditional Evensong service. See page 13 for walk details.



**10 Cheltenham Playhouse SP**

📍 47-53 Bath Road GL53 7HG  
 🕒 Tuesday 10, 11am-3pm  
 🍷 Refreshments/Disabled access (partial)/Toilets  
 ★ Tours every 30 minutes starting at 11am. 8 tours in total. Tours must be booked in advance via our box office on 01242 522852 or www.cheltplayhouse.org.uk  
 Maximum 8 places per tour  
 Converted to a theatre in 1945, the Playhouse has an astonishing history dating back to 1806; it has been a salts works, slipper baths, steam mill, bakery, medicinal spa, indoor cycling school, gymnasium, ARP centre and a swimming pool – which still exists under the auditorium.

**FREE SELF-GUIDED WALKS**  
 Collect from the Holst Victorian House, 4 Clarence Road, Pittville, Cheltenham GL52 2AY (Tuesday to Saturday 10am-4pm). There are eleven walks, written by members of Cheltenham Local History Society and Friends of Pittville, which you can do at your leisure. We are grateful to Honeybourne Gate Retirement Complex for their funding for the printing of the walk sheets.



### Cheltenham Promenaders: Mummers play

- 📍 Various locations around the town
  - 🕒 Sunday 8, beginning at 12.30pm: The Minster Churchyard GL50 3PL; 2pm: Imperial Gardens GL50 1QZ (by Garden Bar); 3.45pm: Montpellier Gardens GL50 1DZ (in front of Bandstand); 6pm: Suffolk Arms, 40 Suffolk Road GL50 2AQ (this performance will be followed by musical entertainment from players and friends)
  - 🍽️ Refreshments & toilets at some locations
  - ★ Each performance lasts approximately 30 minutes
- Cheltonian actor and local history enthusiast, Phil Collins from the Cheltenham Promenaders, has written his own Cheltenham version of a traditional Mummers play. This short play was premiered at The Everyman Theatre last year to celebrate the King's Coronation.



11



© David Savil

### Cheltenham Synagogue

- 📍 Synagogue Lane, St James Square GL50 3PU
  - 🕒 Sunday 8, 10am-2pm. Talk at 2.30pm
  - ♿ Disabled access (limited – please check)/Toilets
  - ★ Local historian, Neela Mann will give a talk at the Synagogue, please see page 17 for talk details
- Cheltenham's Grade II listed Regency Synagogue (consecrated in 1839), contains the oldest Ashkenazi furniture (1761) in use in the UK. There are also two unique prayer plaques from the 18th century. Members will be present to engage with guests.



13

### Cheltenham Cemetery Great War Crosses

- 📍 Cheltenham Cemetery, Bouncers Lane GL52 5JT
  - 🕒 Friday 6 – Sunday 15, during normal cemetery opening hours
  - ♿ Disabled access/Free parking
- Visit the permanent home for the restored wooden crosses. The crosses were placed on battlefields to remember fallen colleagues and were returned to families once the fighting ended. The crosses were conserved and restored, thanks to a grant from the National Lottery Heritage Fund and are now displayed in their new home.



14

### Christ Church

- 📍 Malvern Road GL50 2JH
  - 🕒 Sunday 15, 3pm
  - ♿ Refreshments/Disabled access/Free parking/Toilets
  - ★ Free entry (donations welcome). No pre-booking required
- 'Wings of Faith' – a short concert of choral and organ music with the choir of Christ Church Cheltenham. Followed by coffee and cake. There will be a talk at 4.30pm after the concert, see page 18 for details.



15

### Secret Places Art Exhibition SP

- 📍 The Hub Gallery, Christ Church, Malvern Road GL50 2JH
  - 🕒 Friday 6 – Sunday 15, 10am-4pm. Sundays after 10.30am service, gallery open 12.30-2.30pm and after 'Wings of Faith' concert.
  - ♿ Refreshments/Disabled access/Free parking (limited)/Toilets
- The curious and intrepid will love escaping into the mysteries of these artists' secret places. Whether real, spiritual or part of our beautiful landscape, come and savour the awe and wonder of creativity. Celebration View Sunday 8, 12.30-2.30pm. Drinks and nibbles. Everyone welcome!

### Dean Close School

- 📍 Shelburne Road GL51 6HE
  - 🕒 Wednesday 11, 10am
  - 🕒 Thursday 12, 10am & 2pm
  - 🕒 Saturday 14, 9am & 11am
  - ♿ Refreshments/Disabled access/Free parking/Toilets
  - ★ There is very little of interest for young children
- A day and boarding school established in 1886 and set in 50 acres of parkland in the centre of Cheltenham. Guided tours are approximately 1 hour followed by tea and cake. Tours start at front of main school. There is a maximum of 15 people per tour. Tours must be pre-booked. Please contact Leah Barton on 07958 550471 or lobarton@deanclose.org.uk



16

### The Everyman Theatre

- 📍 Regent Street GL50 1HQ
  - 🕒 Friday 13, 10am-12noon
  - ♿ Refreshments/Disabled access/Toilets
  - ★ An 'open house' to look inside the beautifully restored auditorium. 300 places, no need to pre-book
- Visit the oldest working Frank Matcham designed Victorian theatre, now a prized historical, architectural and theatrical treasure in the heart of Cheltenham. Learn about the history of the theatre, its founding in Regency Cheltenham and its theatrical pedigree.



17

### The Gardens Gallery

- 📍 Montpellier Gardens GL50 1SW
  - 🕒 Friday 6 – Sunday 15, 10am-5pm
- Today, a community art gallery, this interesting little public building with its turrets was originally opened in 1900 as an outdoor theatre 'The Proscenium'. View the inside of the gallery during exhibition opening times and discover the rich history of one of Cheltenham's oldest art spaces.



18



19

### 'Murder Most Unladylike' tours at Cheltenham Ladies' College SP

- 📍 Bayshill Road GL50 3EP
  - 🕒 Saturday 7, 1-4pm
  - ♿ Refreshments/Disabled access (check when making a booking)/Toilets
  - ★ Tours for children (age suitability approximately 8-13) at 1pm, 2pm & 3pm: meet at College Main Entrance on Bayshill Road. Duration 60 minutes. 10 places per tour. Pre-book by emailing hods@cheltcivicsoc.org (please specify child's age when booking)
- Come and see the places that inspired Robin Stevens to create *Deepdean School*. Find the gym where the murder happened, see the original tunnel where the body was hidden. This is an hour long tour for young fans of the Robin Stevens books and includes a bun break with Daisy and Hazel.



**Gloucestershire  
Warwickshire  
Steam Railway (GWSR)**

- 📍 Cheltenham Racecourse Station, Prestbury GL50 4SH
- 🕒 Sunday 8 and Sunday 15, 10.55am
- 🍷 Refreshments/Disabled access (please advise at time of booking)/Free parking/Toilets
- ★ Guests must pre-book their place at hods@cheltcivicsoc.org and then guests must purchase an All Day Rover Ticket (5% discount if booked online in advance <https://www.gwsr.com/your-visit/tickets-fares>)



*Steam Trains between Cheltenham Racecourse and Broadway – How Did That Happen?* Travel down our line from Cheltenham Spa station to Broadway, back to Toddington – explore Toddington, before returning to Winchcombe for a presentation about our railway before returning to Cheltenham.

**Itinerary (not escorted):**

- All Day Rover Ticket Depart Cheltenham Racecourse Station at 10.55am through to Broadway then back on return train departing Broadway at 12.15pm.
- 45 minute layover at Toddington to explore the memorabilia displays.
- Depart Toddington 1.15pm, arrive Winchcombe Platform 1 at 1.25pm.
- Presentation includes questions in Tim Mitchell Building 1.30-2.30pm.
- Depart Winchcombe Platform 2 at 2.37pm on Diesel-Hauled Train.
- Arrive Cheltenham Racecourse Station at 3pm.



21

**Montpellier Gardens**

- 📍 Montpellier Gardens GL50 1SD
  - 🕒 Sunday 8, FOMBAG information 3-5pm
  - 🍷 Refreshments (to purchase from The Garden Café)/Disabled access
  - ★ Cheltenham Silver Band 3-3.45pm & 4.15-5pm; Mummers play 3.45-4.15pm
- The Friends of Montpellier Bandstand & Gardens (FOMBAG) will be on hand with information and history of these beautiful Regency pleasure grounds. There will also be performances by The Cheltenham Silver Band and a Mummers play from The Cheltenham Promenaders.



22

**Normandy House** SP

- 📍 305-309 High Street GL50 3FB
  - 🕒 Saturday 14 (tours only), 10am & 11am
  - 🚻 Disabled access (ground floor only)
  - ★ Duration 50 minutes. Tour covers three floors with no lift. 10 places per tour. Pre-book by emailing hods@cheltcivicsoc.org
- Built c.1813 as a gentleman's residence it became Cheltenham's first General Hospital and Dispensary and, in 1849, one of England's first women's teacher training colleges. Following a period of varied use and an award-winning restoration, it now houses offices and arts facilities (the building is tenanted so not all areas are accessible).



23

**St Andrew's United Reformed Church**

- 📍 Montpellier Street GL50 1SP
  - 🕒 Saturday 14, 11am-3pm
  - 🚻 Disabled access/Toilets
  - ★ Our team of Organists will be having practise sessions on the Father Willis organ throughout opening times
- Grade II Victorian Gothic Church. Opened 1886, refurbished 2002. Spire currently undergoing refurbishment.

**St Christopher's Church**

- 📍 3 Lincoln Avenue, Warden Hill GL51 3DD
  - 🕒 Saturday 14, 2-5pm
  - 🍷 Refreshments/Disabled access/Free parking/Toilets
  - ★ Talks at 2pm, 3pm & 4pm. Bell-ringing between the talks. No booking is needed
- A wonderful mix of stained glass and etched windows, regular talks and self-guided tours. Bell-ringing. Tea and cake. A 1960s building with ten splendid Thomas Denny stained glass windows based on the parables. Unusually, all are set in landscapes from across the British Isles. A Comper window based on medieval and Victorian designs, intended for a church which was never built. Two newly-etched Nicholas Mynheer windows from 2014. A talk about the windows given on each hour. A self-guided tour of the windows with leaflets and stewards available to assist. The lightest ring of bells in a church in the world. See page 18 for talk details.



24

**St Lawrence's Church**

- 📍 Church Road, Swindon Village GL51 9RA
  - 🕒 Saturday 14, 2pm
  - 🍷 Refreshments/Disabled access/Free parking (at Swindon Village Hall about a ¼ mile away on Church Road, or on local streets for those who cannot walk from the village hall)/Toilet(suitable for the disabled)
  - ★ Talk: *The History of Swindon Village* (about 50 minutes) followed by a walk of the conservation area (about 40 minutes). See pages 16 & 18 for more details
- An historic Norman church which includes a display on local farming and market gardening.



25



26

**St Philip and St James Church** SP

- 📍 60 Grafton Road GL50 2DD
  - 🕒 Saturday 7, 10am-4pm
  - 🍷 Refreshments/Disabled access/Free parking/Toilets
  - ★ Tours of Crypt and Columbarium (20 minutes) 10.30am & 11am; 1pm & 1.30pm. No pre-booking needed, but numbers limited to 10 people. Involves steps and limited lighting. Not suitable for children under 12
- A dramatically reordered church with a fascinating history. Self-guided and conducted tours throughout the day. Refreshments and light lunches available. Exhibitions, informal organ recitals, two talks (see pages 16 & 17) and guided tours of the Crypt and Columbarium.
- Tea, coffee, soft drinks and cakes; light lunches. Ramp to avoid steps accessed from Grafton Road. Parking: limited in church car park but local on-street parking available and car park (Bath Road) within five minutes' walk. Four toilets: includes one fully wheelchair-accessible and two with baby-changing facilities.*

**2024 THEMES**



Look out for these symbols in the brochure to discover Cheltenham's Secret Places SP and Connections, Routes and Networks CRN.

**Key for 2024 themes**

- CRN Connections – Routes – Networks
- SP Secret Places



**Bethesda Methodist Church**

📍 Great Norwood Street GL50 2AP  
 🕒 Thursday 5, 6-8pm; Friday 6, 10am-5pm & Saturday 7, 10am-5pm  
 📄 Refreshments/Disabled access/Parking nearby at Bath Road car park/Toilets  
 Explore this early Victorian chapel and learn more about its history and the story of the people who formed Bethesda Methodist Church nearly 200 years ago.



27



28

**History of South Cheltenham Exhibition**

📍 Bethesda Methodist Church, Great Norwood Street GL50 2AP  
 This exhibition illustrates the history of south Cheltenham, with the upper Bath Road at its core. From the Naunton area to Park Place, we show how this district came about, looking at the streets, churches, schools and businesses that made it the diverse and interesting area we know today.

**South Cheltenham History Festival**

The festival includes talks, walks (pre-booked), a slide show and displays of local objects. See the following entries for more details.

Supported by:



**Talk: 'Dissenters' boxes' – Nonconformist Chapels of Early 19th Century Cheltenham**

📍 Dr Steven Blake 📍 Bethesda Methodist Church  
 🕒 Friday 6, 2.30pm 🕒 Duration 60 minutes. 100+ places. Booking not required  
 As well as Bethesda, the first half of the 19th century saw the building of many Nonconformist chapels in Cheltenham, most of which survive, albeit mainly in secular use. We shall look at the buildings and their history, encouraging those attending to go and explore for themselves.



29

**Talk: The Genesis of Cheltenham's 'South Town' in the Early Years of the 19th Century**

📍 Stuart Manton 📍 Bethesda Methodist Church  
 🕒 Friday 6, 4pm 🕒 Duration 60 minutes. 100+ places. Booking not required  
 Cheltenham grew rapidly southwards in the early decades of the 19th century. This richly illustrated talk looks at how the area formerly known as 'south town' was created, whilst earlier industrial activity was overtaken by the new residential estates.



30

**Talk: 196 Years of Faith and Service – the Story of Bethesda Methodist Church**

📍 Keith Norman 📍 Bethesda Methodist Church  
 🕒 Saturday 7, 2pm 🕒 Duration 60 minutes. 100+ places. Booking not required  
 Bethesda Methodist Church has been at the heart of south Cheltenham since early Victorian times. This talk explores the fascinating history of this place and the people who have worshipped here, spanning almost 200 years.



31

**Talk: Journeying to Net Zero – the Challenges of Greening a Heritage Building**

📍 Peter Boait 📍 Bethesda Methodist Church  
 🕒 Saturday 7, 4pm 🕒 Duration 60 minutes. 100+ places. Booking not required  
 Drawing upon the real-life experience of Bethesda Methodist Church, we will hear about the opportunities and challenges associated with adapting older buildings to meet net zero carbon. Come prepared to be inspired about the possibilities.



32

**Walk: Cheltenham's Bath Road – 200 Years of Trading History**

📍 Stuart Manton 📍 Start & Finish: Bethesda Methodist Church  
 🕒 Friday 6, 10.30am 🕒 Duration 90 minutes. 12 places.  
 Pre-book by emailing hods@cheltcivicsoc.org  
 Starting outside Bethesda Methodist Church, this circular walk follows the route of the Leckhampton Tramway to the Norwood Triangle and the Norwood Arms. We then walk along Bath Road and hear about the history of this vibrant area, stopping to look at some of the shops, pubs and other notable buildings.



33

**Walk: The Developers of the Naunton Area – 1850-1950**

📍 Derek Scarborough  
 📍 Start: Bath Road GL53 7NF Finish: Fairfield Walk GL53 7GH  
 🕒 Friday 6, 12.30pm; Saturday 14, 10am & Sunday 15, 10am  
 🕒 Duration 90 minutes. 8 places. Pre-book by emailing hods@cheltcivicsoc.org  
 A saunter around the Naunton and Fairfield Estates, from Karenza to Trowscoed Lodge by way of Fairfield House. Discover who owned the most houses in Cheltenham, who was responsible for the demolition of both Fairfield House and Trowscoed Lodge, and why there were so many laundries in Leckhampton.



34

**Walk: The Suffolks – Cheltenham's Southern Regency Suburb**

📍 Stuart Manton 📍 Start & Finish: Bethesda Methodist Church  
 🕒 Saturday 7, 10.30am 🕒 Duration 90 minutes. 12 places.  
 Pre-book by emailing hods@cheltcivicsoc.org  
 Starting outside Bethesda Methodist Church, this circular walk takes us into Suffolk Square and the site of Gallipot Farm. We then visit Suffolk Parade, with its mix of boutique shops, cafés and restaurants, and continue to Cheltenham College in Bath Road, before returning along Suffolk Road to the start point.



35



**The Wilson Art Gallery and Museum**

- 📍 51 Clarence Street GL50 3JT
- 🕒 Tuesday–Sunday, 10am-5pm
- 🍽️ Refreshments available to purchase from The Wilson Kitchen/Disabled access/Toilets
- ★ Workshops for children (ages 6-10) available: The History of Cheltenham in 7 People. *More details on page 12.* Pre-book by emailing hods@cheltcivicsoc.org

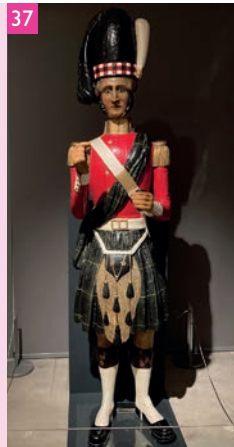
The Wilson is home to an internationally significant museum collection of exceptional quality and variety, changing displays of our Designated Arts and Crafts Movement collection, fine art collections, and The Open Archive, which houses our fascinating archives relating to Antarctic explorer Edward A. Wilson, Cheltenham's history, and the Emery Walker Library.



36

**Workshop: The History of Cheltenham in 7 People**

- 📍 The Wilson Art Gallery and Museum, Community Gallery, 51 Clarence Street GL50 3JT
  - 🕒 Saturday 7, 10am & 1pm
  - 🍽️ Refreshments/Disabled access/Toilets
  - ★ Duration 2 hours. 10 places per workshop. For children, ages 6-10. Free (ticketed). Please note that each session is a distinct workshop; please only book tickets for one. Pre-book by emailing hods@cheltcivicsoc.org
- In collaboration with The Everyman, based in The Wilson's *Play! House* exhibition, come and join our workshop to create a short performance about the history of Cheltenham based on 7 key local figures. Bring the characters to life using our sets, props, costumes and even instruments, as we produce a fun and exciting performance that parents and guardians can watch, all presented on our beautifully designed stage. Don't like acting? You can help with the 'behind the scenes' and learn how to produce a play!
- This is a drop-off session, although parents are welcome to stay and watch the process; there is plenty of information and a wonderful selection of artefacts to keep the grown-ups out of trouble whilst the REAL stars of the show work their magic. *Adults: come back 20 minutes before the end of the session to see what we've created!*



37

# GUIDED WALKS AND TALKS – HOW TO BOOK

It is essential to pre-book for all guided walks and some talks (see individual entries for details). Entry to all walks and most talks is by ticket only. Bookings can be made from **5 August** until one day before the walk/talk.

Bookings must be made by email to [hods@cheltcivicsoc.org](mailto:hods@cheltcivicsoc.org). You will be sent a pdf of the ticket which you must show when joining the event. When you make a booking you will be asked to give your contact phone number so if there are any changes you can be contacted with an update. Your contact details will only be held for 6 weeks. **If you don't have access to email you may call 07711 631962 for assistance with the booking.**

We are very grateful to all walk and talk leaders who are giving their own knowledge, time and enthusiasm free of charge and without them Heritage Open Days would be much poorer.

Please carefully check the entry in this brochure for the event you are interested in and ensure that you book correctly. Please note that all walks and talks finishing times are approximate.

**Cheltenham Civic Society**

**Walk: Walks Around the Memorials of The Minster**

- 👤 Neela Mann
  - 📍 Start & Finish: Cheltenham Minster, Well Walk off Clarence Street GL50 3PL
  - 🕒 Friday 6, 11am
  - ⌚ Duration 60 minutes. 15 places. Pre-book by emailing hods@cheltcivicsoc.org
- Join Neela Mann, local historian for a tour around the Minster and the stories behind a few of the memorials including some Brewers, Bankers and Barons.



38

**Walk: Pittville Circus roundabout – Guided Tree Walk**

- 👤 Chris Chavasse
  - 📍 Start & Finish: Centre of Pittville Circus roundabout
  - 🕒 Friday 6, 4pm
  - ⌚ Duration 75 minutes. 35 places. Pre-book by emailing hods@cheltcivicsoc.org
- Guided walking tour by Cheltenham Borough Council Trees Officer of the many and varied native and exotic, large and small, young and old trees within the roundabout. *Outdoors, walking on grass and under low tree canopies!*



39

**Walk: Sherborne – Bat Walk**

- 👤 Mike Robinson and Paul Saunders
  - 📍 Start & Finish: Sherborne Allotments GL54 3DS
  - 🕒 Friday 6, 7.15pm
  - ⌚ Duration 2 hours. 10 places. No children under 12. No dogs. On road parking, please respect local residents. Pre-book by emailing hods@cheltcivicsoc.org
- An evening walk and talk on the local bat population with the chance to see and hear bats in flight. *Uneven ground, good off-road shoes, warm clothes, torch and a Bat Detector if you have one.*



40

**Walk: A Historical Journey Across Cleeve Common**

- 👤 David Aldred
  - 📍 Start & Finish: Cleeve Common Golf Club Veranda
  - 🕒 Saturday 7, 10am
  - ⌚ Duration 2½ hours. 20 places. Pre-booking required <https://tinyurl.com/5bnht8rh>
- Cleeve Common is criss-crossed by innumerable tracks and paths, some of which are very ancient. This walk will sample as many of them as possible. Led by David Aldred who will explain their history. Booking is essential. Donations are very welcome. All donations will go towards looking after this special place for future generations. *Dog on leads welcome. No off lead dogs please. Some steep slopes and uneven ground.*



41

**Walk: Cheltenham Surprises and Delights**

- 👤 William Lewis
  - 📍 Start: Ancey Garden, Sandford Park, High Street
  - 📍 Finish: Town Hall, Imperial Square
  - 🕒 Saturday 7, 11am
  - ⌚ Duration 90 minutes. 15 places.
- Pre-book by emailing [Annette.Wight@cheltenham.gov.uk](mailto:Annette.Wight@cheltenham.gov.uk)
- Join local author William Lewis on a short walk to celebrate the stories of about a dozen of central Cheltenham's iconic locations. *Easy walking, level ground. Probably not of interest to very young children.* (William's podcast *Stories at Will* is available on Spotify, Apple Podcasts and Amazon.)



42

**Walk: Stories of the First World War** SP

- 👤 Amy Kitcher
  - 📍 Start & Finish: Car park of Cheltenham Cemetery, Bouncers Lane, Prestbury GL52 5JT
  - 🕒 Saturday 7, 11am
  - ⌚ Duration 75 minutes. 20 places. Pre-book by emailing [amy.kitcher@cwgc.org](mailto:amy.kitcher@cwgc.org)
- Come along to find out more about the work of the Commonwealth War Graves Commission whilst exploring the First World War graves in our care in Cheltenham Cemetery. *The cemetery is flat, but caution must be used when leaving any paths due to concealed trip hazards. Come dressed for the weather and in suitable walking shoes.*



43

44



**Walk: Stories of the Second World War**

↓ Amy Kitcher    ♣ Start & Finish: Second World War plot Cheltenham Cemetery, Bouncers Lane, Prestbury GL52 5JT    ☉ Saturday 7, 2pm  
 ⌚ Duration 60 minutes. 20 places. Pre-book by emailing amy.kitcher@cwgc.org  
 Come along to find out more about the work of the Commonwealth War Graves Commission whilst exploring the Second World War graves in our care in Cheltenham Cemetery. *The cemetery is flat, but caution must be used when leaving any paths due to concealed trip hazards. Come dressed for the weather and in suitable walking shoes.*

45



**Walk: Great Women Sculptors**    GRN

↓ Tess Beck  
 ♣ Start: Neptune's Fountain, The Promenade GL50 1PJ  
 Finish: Opposite Wagamama, Clarence Street GL50 3JQ  
 ☉ Sunday 8, 11am  
 ⌚ Duration 60 minutes. 15 places. Pre-book by emailing hods@cheltcivicsoc.org  
 A short walk and talk, looking in-depth at three pieces of 20th century public art. The works are all by significant women sculptors: Lady Kathleen Scott, Sophie Ryder, and Dame Barbara Hepworth. *We will be walking on paved streets in the town centre.*

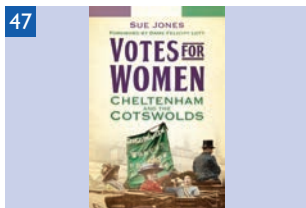
46



**Walk: Statues and Odd Structures**

↓ Martin Ward  
 ♣ Start & Finish: Holst statue, by the fountain, Imperial Gardens  
 ☉ Sunday 8, 11am  
 ⌚ Duration 90 minutes. 15 places. Pre-book by emailing hods@cheltcivicsoc.org  
 A walk around Cheltenham to see some of the statues and odd structures and learn something about them and their history.

47



**Walk: Votes for Women!**

↓ Sue Jones  
 ♣ Start: Cheltenham Town Hall steps, Imperial Square  
 Finish: Clarence Street lamp  
 ☉ Sunday 8, 11.30am and 2.30pm  
 ⌚ Duration 60 minutes. 15 places. Pre-book by emailing hods@cheltcivicsoc.org  
 A short illustrated stroll through the centre of Cheltenham to discover where important events took place in the campaign for women's right to vote.

48



**Walk: Town Centre Public Art**    GRN

↓ Tess Beck  
 ♣ Start: Outside The Wilson, Cheltenham Art Gallery & Museum, Clarence Street GL50 3JT. Finish: Neptune's Fountain, The Promenade GL50 1PJ  
 ☉ Sunday 8, 2pm  
 ⌚ Duration 90 minutes. 15 places. Pre-book by emailing hods@cheltcivicsoc.org  
 An introduction to some of the town centre's public art and the Cheltenham Public Art Trail. *We will be walking on paved streets in the town centre.*

49



**Walk: Cheltenham General Hospital before the NHS**

↓ Heather Atkinson  
 ♣ Start & Finish: Cheltenham General Hospital, Sandford Rd entrance, front steps  
 ☉ Sunday 8 & Sunday 15, 2pm  
 ⌚ Duration 90 minutes. 15 places. Pre-book by emailing hods@cheltcivicsoc.org  
 The walking tour covers interior and exterior architectural features of the original building and an explanation of the Voluntary Hospital system. A 'sit down' talk then gives more detail of the innovative ways money was raised to provide the necessary expansion of services between the wars, including early cancer therapy.

**Walk: Skillicorne to Skillicorne**

↓ Neela Mann  
 ♣ Start: Meet outside Cheltenham Minster, St Mary's, Well Walk off Clarence Street GL50 3HF  
 ☉ Monday 9, 11am & 2.30pm  
 ⌚ Duration 60 minutes (approximately). 10 places.  
 Pre-book by emailing hods@cheltcivicsoc.org  
 Explores sites connected to the 'father of Cheltenham' who developed the spa and those of his descendants.

50



**Walk: A Peoples Park and Wildlife Corridor**

↓ Chris Archibald & Sally Thomas  
 ♣ Start & Finish: The Boat House Café, Pittville Park West GL52 2AP  
 ☉ Monday 9, 2.30pm and Thursday 12, 10.30am  
 ⌚ Duration 60 minutes. 20 places. Pre-book by emailing hods@cheltcivicsoc.org  
 A walk on the northern side of the lower lake, describing the history of the West side of the park and the Agg Gardner Recreation Ground, created for the people of Cheltenham. Stops at three habitat boards will describe how the park provides a green corridor for a range of wildlife. *Not suitable for small or unsupervised children.*

51



**Walk: Cheltenham Backwaters – Exploring the River Chelt**    SP

↓ Mary Moxham  
 ♣ Start: Rear of The Meadow Café, Old Bath Road  
 Finish: Honeybourne/Waitrose Bridge  
 ☉ Tuesday 10, 10am & Friday 13, 10am  
 ⌚ Duration 90 minutes. 15 places. Pre-book by emailing hods@cheltcivicsoc.org  
 A linear walk, following part of the River Chelt from Cox's Meadow through Sandford Park and the town centre and out towards Arle.

52



**Walk: Booze, Balloons and Burials**

↓ Neela Mann  
 ♣ Start & Finish: Honeybourne Gate, 2 Gloucester Road GL51 8DW  
 ☉ Tuesday 10, 2.30pm  
 ⌚ Duration 60 minutes. 10 places. Pre-book by emailing hods@cheltcivicsoc.org  
 Stories of the development of the Lower High Street area, with special reference to the Dobell family. This walk takes in the gas works, a short way up the Gloucester Road, Winston Churchill Memorial Gardens, the Honeybourne Line and some of the streets surrounding Honeybourne Gate. *Park in Tesco Car Park.*

53



**Walk: The Prestbury You Didn't Know**

↓ Roger Beacham and Tony Noel  
 ♣ Start & Finish: Prestbury Library, The Burgage GL52 3DN  
 ☉ Wednesday 11, 2pm  
 ⌚ Duration 60 minutes. 15 places. Pre-book by emailing prestburyhistory@gmail.com or by phone 07981 938 179  
 One hour walk to hear about Tennyson and the cold water cure and Prestbury's association with the Bloomsbury Group. See the grave marker of General Whynayes and hear about his command of the Rocket Brigade at Waterloo.

54



**Walk: Why is Cleeve Common Special?**

↓ Cleeve Common Trust team    ♣ Start & Finish: Cleeve Common Golf Club Veranda    ☉ Thursday 12, 5.30pm    ⌚ Duration 2 hours. 25 places.  
 Pre-booking required <https://tinyurl.com/43mr3u2w>  
 A guided walk exploring themes which make the Common such a special place for people and wildlife. Booking is essential. Donations are very welcome. All donations will go towards looking after this special place for future generations. *Dog on leads welcome. No off lead dogs please. Some slopes and uneven ground.*  
*If you have any access or additional needs please email [hello@clevecommon.org.uk](mailto:hello@clevecommon.org.uk) and we will do our best to accommodate you.*

55







56

**Walk: Gustav Holst's Cheltenham**

1 Laura Kinnear (Curator) & Paul Treble (Volunteer), Holst Victorian House  
 2 Start: Outside the Rotunda (The Ivy Restaurant) Montpellier Street GL50 1SW  
 Finish: Holst Victorian House, 4 Clarence Road, Pittville GL52 2AY  
 3 Saturday 14, 10.30am  
 4 Duration 90 minutes. 10 places. Pre-book by emailing hods@cheltcivicsoc.org  
 Explore some of the landmarks in the town associated with Gustav Holst and his family and the inspiration for some of his music. Finish at Holst Victorian House and enjoy tea and birthday cake for Holst's 150th birthday (for a small donation).



57

**Walk: Off the Rails in Leckhampton – Travelling, Through Time CRN**

1 Becky Dine 2 Start: Old Railway Bridge, Leckhampton Road GL53 0BN  
 Finish: Church Road, Leckhampton GL53 0PR 3 Saturday 14, 10.30am  
 4 Duration 75 minutes. 10 places. Pre-book by emailing hods@cheltcivicsoc.org  
 A linear walk to explore the varied transport methods employed historically in Leckhampton. Connecting people, goods and places, numerous forms of transport were introduced, evolved and were lost within a century, reflecting social and industrial change. *Gentle uphill gradient on sealed footpaths.*



58

**Walk: The Swindon Village Conservation Area**

1 Barry Simon  
 2 Start & Finish: St Lawrence's Church, Church Road, Swindon Village GL51 9RA  
 3 Saturday 14, 3pm (after the talk)  
 4 Duration 40 minutes. Booking not required  
 A tour of the conservation area including the Manor and Swindon Hall. Less than 1 mile easy walking. Tea and refreshments available after the talk and after the walk.



59

**Walk: Regency Cheltenham**

1 Mary Moxham  
 2 Start & Finish: Outside Cheltenham Town Hall, Imperial Square  
 3 Sunday 15, 10am  
 4 Duration 90 minutes. 15 places. Pre-book by emailing hods@cheltcivicsoc.org  
 Explore the development of this Regency spa town; discover architectural highlights and significant personalities in Cheltenham's history.



60

**Talk: The Greys: Black Gold, Navy and Silver CRN**

1 Neela Mann  
 2 St Philip & St James Church, 60 Grafton Road, Leckhampton GL50 2DD  
 3 Saturday 7, 11.30am  
 4 Duration 60 minutes. 50 places. No need to pre-book  
 An illustrated one hour lecture. There are memorials to five members of the Grey family in Pip & Jim's, but who were they? This new talk charts the exploits of a family who made their mark on land and sea from the East Indies to the West Indies. *No children under 10.*



61

**Talk: Memorial Plaques of the Dutton Family**

1 Byron Hadley  
 2 St Mary Magdalene Church, Sherborne GL54 3DW  
 3 Saturday 7, 2pm  
 4 Duration 90 minutes. Booking not required. On road parking, please respect local residents  
 A talk about and the chance to see the memorial plaques and statues of the Dutton family at St Mary Magdalene Church in Sherborne.



62

**Talk: Satan in the Sedilia: the Hidden History of Pip & Jim's**

1 Adrian Barlow  
 2 St Philip & St James Church, 60 Grafton Road, Leckhampton GL50 2DD  
 3 Saturday 7, 2pm  
 4 Duration 60 minutes. 50 places. No need to pre-book  
 An illustrated lecture on the history of this church, answering some previously unresolved questions: why was the earlier church (St Philip's) demolished after only forty years? What messages are hidden in the reredos and chancel screen? Why is Satan hiding in plain sight in the Sanctuary? *No children under 10.*

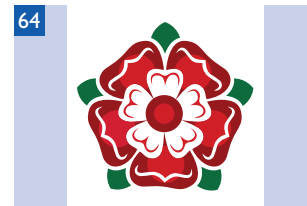


63

**Talk: William Hill Knight: Architect, His Works and Life**

1 Neela Mann  
 2 Cheltenham Synagogue, Synagogue Lane, St James Square GL50 3PU  
 3 Sunday 8, 2.30pm 4 Duration 50 minutes. 45 places. Pre-booking required  
 info@cheltenhamssynagogue.org.uk from Thursday 1 August  
 The Synagogue was William Hill Knight's first commission at the age of 22 but he went on to design many classic buildings in Cheltenham, many of which are still in use. But which ones? This talk tells of this little known architect and his importance to the town.

© Neela Mann



64

**Talk: Queen Katherine Parr – Gloucestershire's Queen**

1 Mike Bottomley  
 2 St Andrew's United Reformed Church, Montpellier Street GL50 1SP  
 3 Monday 9, 11.30am  
 4 Duration 45 minutes. No need to pre-book  
 Survived! The Life, Loves and Times of the Last Wife of Henry VIII. The largely unknown story of this incredible Queen and her journey from obscurity to the heart of English history and on to her final resting place at Sudeley Castle.



65

**Talk: Hindus, Evangelists and Sanskritists**

1 Jim Markland  
 2 Montpellier Hall, St Andrew's United Reformed Church, Montpellier Street GL50 1SP 3 Monday 9, 1.30pm  
 4 Duration 90 minutes. No need to pre-book  
 Inspired by Cheltenham's historical Anglo-Indian connections, discoveries in Trinity Crypt and a recent visit to Calcutta, Jim explores some of the issues around the Hindu religion, the attitude of 18th and early 19th century Evangelists to Hindus and the scholarship of Sanskrit, the language of Hindu scriptures.



66

**Talk: Booze, Balloons and Burials**

1 Neela Mann  
 2 Cheltenham Spa Bowling Club, 5 St George's Square (entrance on Lower High Street) GL50 3LJ  
 3 Tuesday 10, 11am  
 4 Duration 60 minutes. 50 places. Pre-book by emailing hods@cheltcivicsoc.org  
 A saunter around the history of the lower High Street area. Local historian Neela Mann tells the story of the area. This illustrated talk is also a walk of the area led by Neela.



67

**Talk: Cheltenham from on High**

1 Neela Mann  
 2 Honeybourne Gate, 2 Gloucester Road GL51 8DW  
 3 Wednesday 11, 11am & 2.30pm  
 4 Duration 30 minutes. 10 places. Pre-book by emailing hods@cheltcivicsoc.org  
 A brief look at the history of Cheltenham's churches from those seen from the panoramic roof garden of Honeybourne Gate. *You are welcome to have a look round Honeybourne Gate after the talk. Park in Tesco Car Park.*

© Stephen Ladyman





**68** **Talk: Cheltenham Cemetery Great War Crosses**  
 1 Neela Mann  
 Cheltenham Cemetery, Bouncers Lane GL52 5JT  
 Friday 13, 12noon  
 Duration 30 minutes. No need to pre-book  
 Neela Mann, local historian, who was involved in the research, along with students from Pittville School, of the soldiers and their crosses. This fascinating talk reveals the stories of some of the soldiers and how the crosses taken from the battlefield now have a new permanent home. Follow the signs to the exhibition.



**69** **Talk: Hiding In Plain Sight – the Stained Glass of Thomas Denny** SP  
 1 Trish Burns  
 St Christopher's Church Lincoln Avenue, Warden Hill GL51 3DD  
 Saturday 14, 2pm, 3pm & 4pm. Bell-ringing between the talks.  
 Duration 15 minutes. No booking is needed  
 A talk on our ten Thomas Denny stained glass windows, our etched Mynheer and stained glass Comper windows. Tea and cake.



**70** **Talk: The History of Swindon Village**  
 1 Barry Simon  
 St Lawrence's Church, Church Road, Swindon Village GL51 9RA  
 Saturday 14, 2pm  
 Duration 50 minutes. Booking not required  
 An illustrated talk about Swindon Village and its historic Norman Church. Tea and refreshments available after the talk.



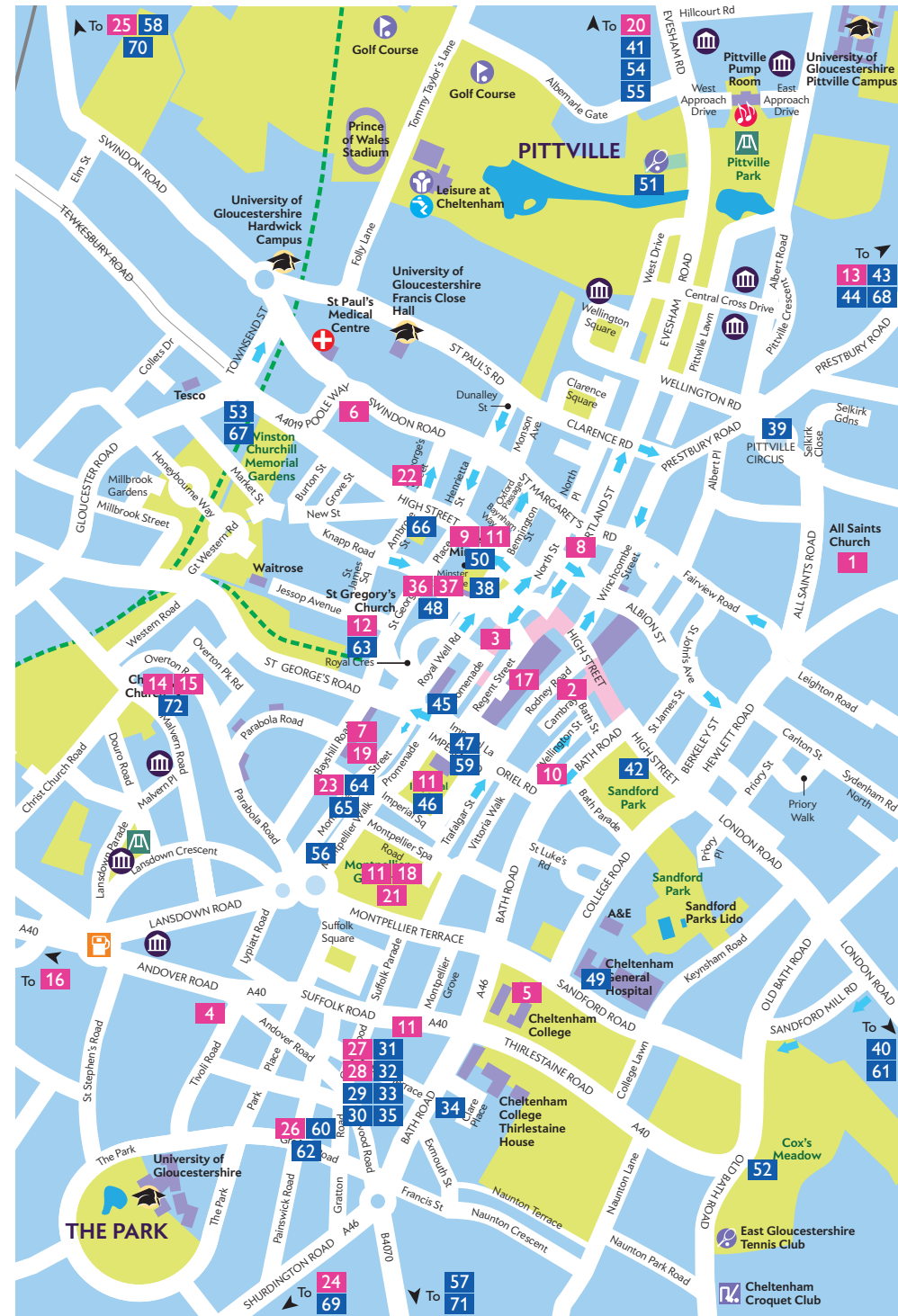
**71** **Talk: Thugs or Martyrs – The Leckhampton Riots**  
 1 Neela Mann  
 Glebe Cottages, Church Road, Leckhampton GL53 0QJ (cottages adjacent to St Peter's Church)  
 Saturday 14, 2.30pm  
 Duration 60 minutes. 40 places. Pre-book by emailing hods@cheltcivicsoc.org  
 Paths people had walked on over Leckhampton Hill for years were blocked when Henry Dale bought the hill in 1897. Thousands of people tried upholding the rights of way with demonstrations year after year but it took a group of local working men to stand up to Dale, but they paid the price. Local historian Neela Mann tells the story.



**72** **Talk: The Stained Glass Windows of Christ Church**  
 1 Andrew Judge  
 Christ Church, Malvern Road GL50 2JH  
 Sunday 15, 4.30pm  
 Duration 45 minutes. 20 places. Pre-book by emailing hods@cheltcivicsoc.org  
 A guided tour inside church. The stories behind our 19th century stained glass windows.

You're here because you care about Cheltenham. Join us.

Facebook.com/cheltenhamcivicsociety  
 Twitter and Instagram: @cheltcivicsoc  
 Web: cheltcivicsoc.org/





WOULD  
YOU LIKE  
TO TRY  
PLAYING  
BOWLS?



**CHELTENHAM SPA BOWLING CLUB**  
would be delighted to show you how to play.  
Please get in touch to arrange a **FREE** taster  
session on [social@cheltenhamspa.org.uk](mailto:social@cheltenhamspa.org.uk)  
or call **07775 855962**.

COTSWOLD MARKETS LTD.

OUR MARKETS IN CHELTENHAM

FARMERS & FINE FOOD

2ND AND LAST FRIDAY  
OF EVERY MONTH

9:00AM - 2:00PM

THE PROMENADE, GL50 1LE

ARTS & CRAFTS

3RD SATURDAY OF  
EVERY MONTH

9:00AM - 5:00PM

THE PROMENADE, GL50 1LE

[WWW.COTSWOLDMARKETS.COM](http://WWW.COTSWOLDMARKETS.COM)